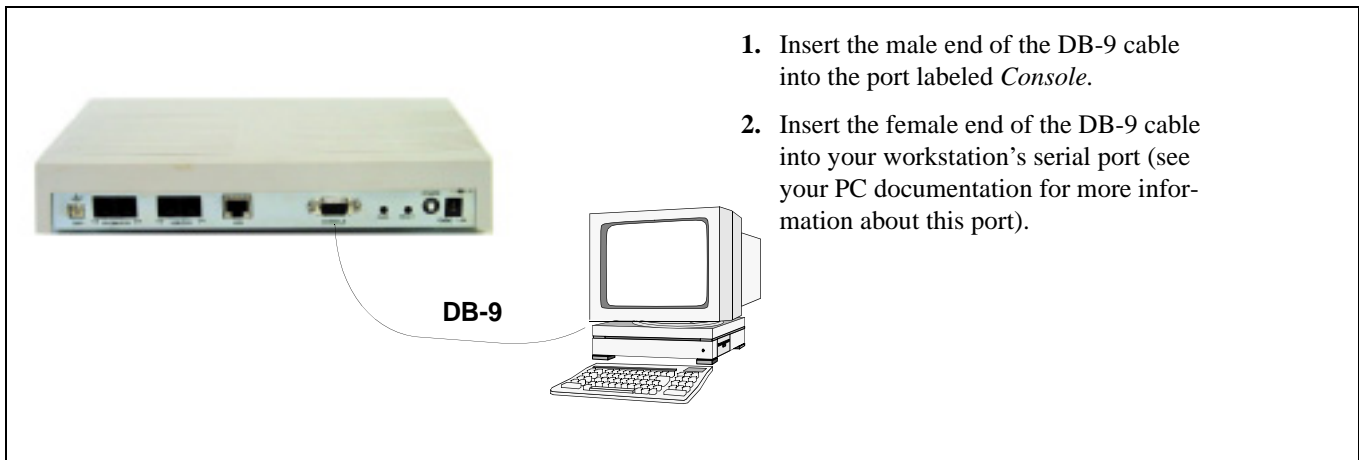


Tenor™ AS Quick Start

STEP 1: Connect to Console Port

Connect to PC Console. You will need to connect the *Tenor AS* to your workstation's serial port through the RS-232 connection. (This connection will be used when you assign an IP address to the unit.) For the instructions below, it is assumed you are connecting to a Windows PC.

Figure 1: Connect to PC Com Port



STEP 2: Power Up the System

1. Plug in the power cord to an AC outlet.
2. Locate the on/off switch on the back of the unit and click the switch to **On**.

STEP 3: Configure Terminal Software/Assign IP address to Tenor AS

Before you can configure *Tenor AS*, you need to assign a valid IP address. When a *Tenor AS* is shipped to a customer, you need to assign a valid IP address for each unit. An IP address is a 32 bit (up to 12 numeric characters) address used to identify each network device in the TCP/IP network. If the unit does not have an IP address, data will not be able to be sent to or from the unit.

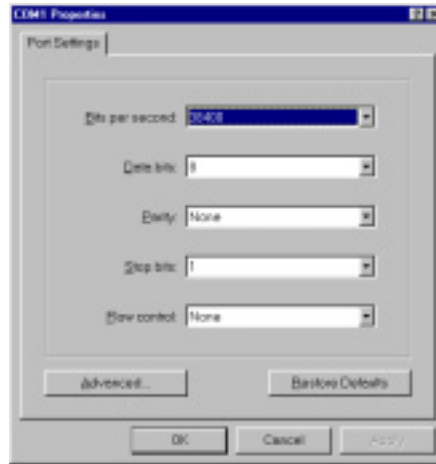
Communication between the Tenor and the PC is enabled via RS-232 connection and terminal emulation software. The instructions below assume you are running HyperTerminal (running Windows 95 or later) on your PC. For all other terminal emulation packages, the specific Tenor commands used to assign the IP address will be the same, but the software specific instructions will be different. Consult the applicable documentation for more information.

You can re-configure the IP address using the procedure which follows.

1. Press the Tenor AS's power switch to **On**.
2. Click on *Start> Programs> Accessories> Communications>HyperTerminal> Run*. The *Connection Description* window will be displayed.
3. Enter a connection name (i.e., name for each unit such as *Tenor AS New Jersey*).

4. Click **Ok**.
5. Choose the serial port on your PC from the *Connect Using* drop down list box (i.e., Direct to Com 1). Click **Ok**. The *Com1 Properties* window will be displayed. See Figure 3-2.

Figure 3-2 *Port Settings* Window

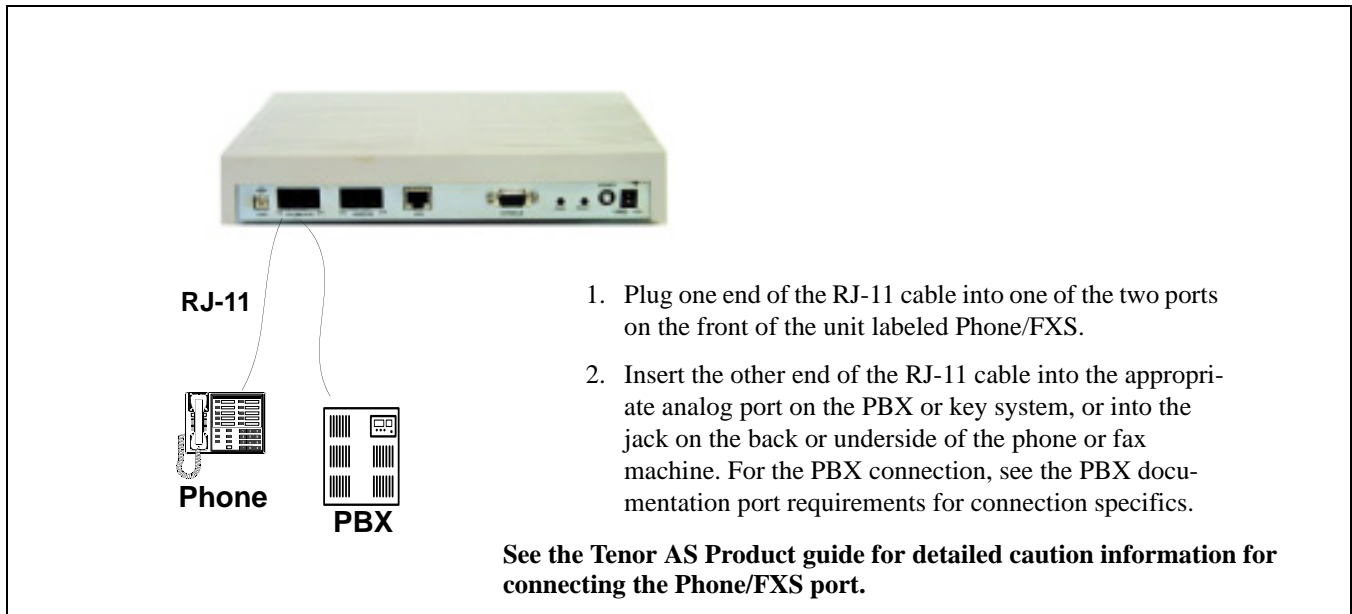


6. From the *Bits Per Second* drop down list box, choose *38400*.
 7. From the *Data Bits* drop down list box, choose *8*.
 8. From the *Parity* drop down list box, choose *None*.
 9. From the *Stop bits* drop down list box, choose *1*.
 10. From the *Flow control* drop down list box, choose *None*.
 11. Click **Ok** and a connection to the Tenor will be established. Information about the unit will scroll on the screen.
 12. Enter **login** and **password**. Both are **admin** by default.
 13. A message will appear on the screen “Tenor Analog does not have an Ethernet interface configured. Would you like to configure an Ethernet Interface?” (y/n).
 14. Type **y**.
 15. For *IP Address*, enter the IP address for the Tenor unit.
 16. For *Subnet Mask*, enter the subnet mask. This address is used to differentiate the network portion of the IP address from the host portion of the IP address.
 17. For *Default Gateway*, choose whether there should be a default gateway (router) which routes packet data outside of your LAN and enter its IP address.
 18. A message will appear on the screen “Tenor Analog Ethernet Interface successfully configured.” The Tenor will restart using the new Ethernet settings.
- Tenor will restart using the new Ethernet settings. Once the IP information is set, you are ready to configure the unit and make the first call. See the *Tenor AS User's Guide* (included on your CD ROM) for details.

STEP 4: Connect to Phone/FXS Interface

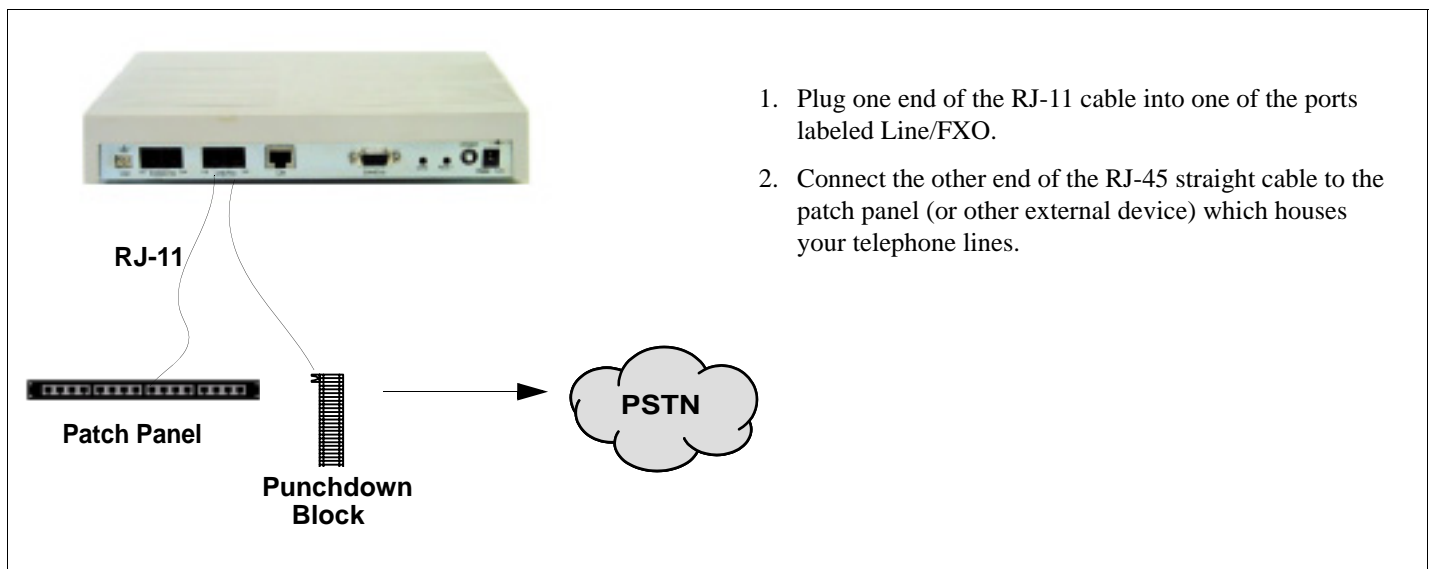
Depending on your order, you will have received either a double-ended or a single-ended 50-pin Telco cable. See the *Tenor AS User's Guide* (included on your CD ROM) for details for preparing the cables for connection (i.e., if you ordered a single-ended cable, you must prepare it for use with your application).

Figure 3: Connect to Phone/FXS Interface



STEP 5: Connect to Line/FXO Interface

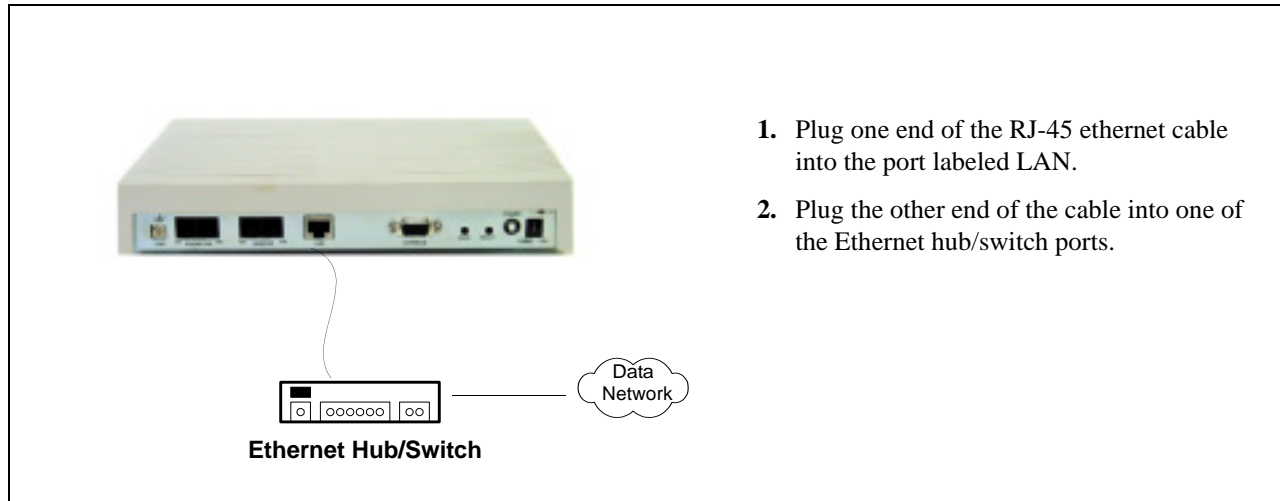
To connect to the Line/FXO port, you must first connect the analog phone lines to another piece of equipment that houses your telephone lines running to the PSTN, such as the patch panel, punch down block or wire wrap blocks. If you are unsure of the installation procedures, contact the network administrator or review the documentation you received with the PBX.



STEP 6: Connect to Ethernet Hub/Switch (LAN)

You can use these instructions for general connection purposes only. The Ethernet hub/switch manufacturer's documentation should provide specific instructions for connection to another device, such as the *Tenor AS*.

Figure 4: Connect to Ethernet Hub/Switch



STEP 7: Configuration

You are able to configure the unit through the Tenor Configuration Manager (for more information see the *Tenor Configuration Manager/Tenor Monitor User's Guide*) or through the Command Line Interface (CLI) (see the *Command Line Interface User's Guide*). Both guides are available on the CD ROM you received with the unit.